

## iWellness and Retinal Imaging Policy

Your eyesight is priceless and we are here to protect it. Vision threatening diseases such as *glaucoma*, *macular degeneration*, and *diabetic retinopathy* often have no outward signs or symptoms in the early stages. The iWellness exam with Optomap is a quick, non-invasive series of scans that allows your doctors to both see the surface and beneath the surface of your retina. This unique technology can help our doctors detect vision threatening and systemic diseases in their very early stages, when they are most treatable.

As part of your pre-exam testing, our technicians will perform the Optomap and/or iWellness scans, which your doctor will review with you during your examination today. Our doctors recommend the iWellness scan on all patients 40 and over and some patients over 18. Optomap retinal images should be taken on all patients. Costs for these tests are usually not covered by medical or vision insurance because they are screening tests. Depending on which testing your doctor selects for you there will be a charge of either \$30 for Optomap retinal photos only or \$49 for Optomap retinal photos with iWellness OCT imaging. These images make it less likely that the doctor will need to dilate your eyes today. Any questions you have about Optomap Retinal Imaging or iWellness OCT screening can be discussed with your technicians or doctor during your examination. Thank you for trusting us to care for the long-term health of your eyes and vision!

I have read and understand this document:

Sign: \_\_\_\_\_

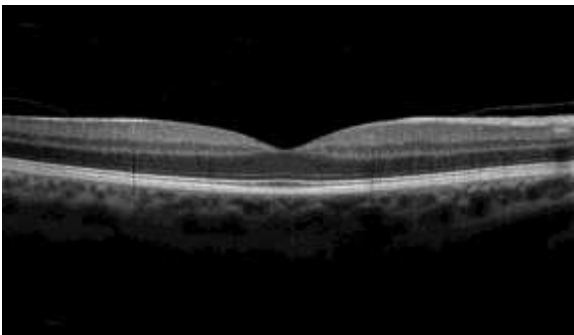
Date: \_\_\_\_\_

REINHOLT  THALLEMER  
EYE CARE ASSOCIATES

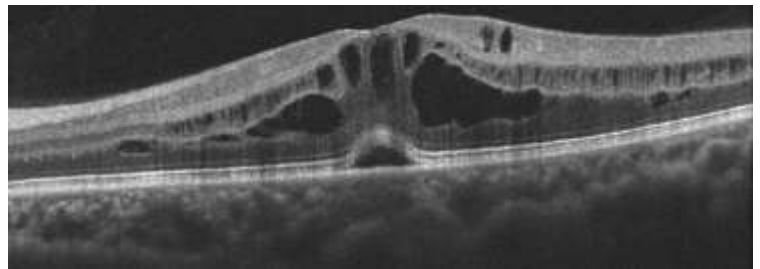
A MEMBER OF *VISION SOURCE*®

**iWellness** *Exam*

Normal iWellness Scan of Macula



Abnormal iWellness scan of Macula with swelling



 **optomap**®  
ultra-widefield retinal imaging

